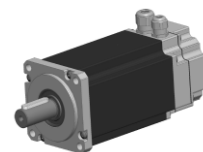


Enquiry N°:

Created by: DS / Approved by: PP

SERVO MOTOR

060LDA30XFACTX062160-SGVx



Definition

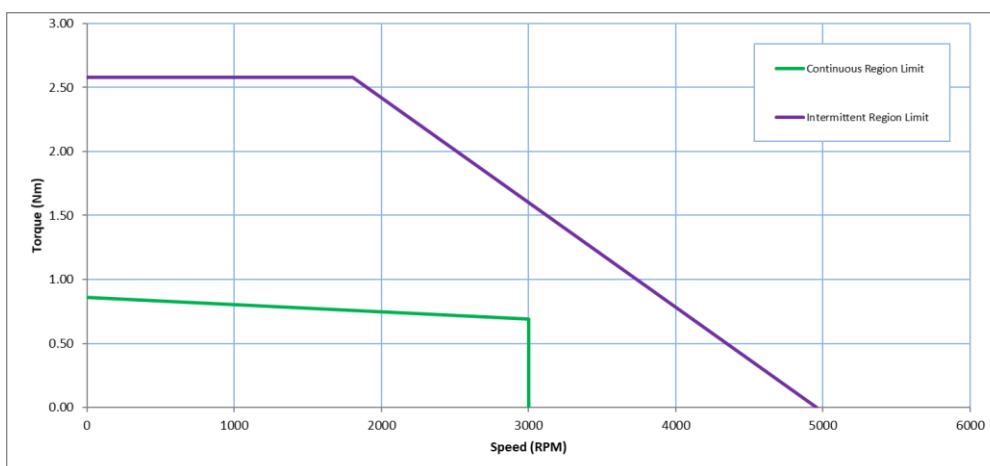
Type	Unimotor HD	
Frame Size (mm)	060	
Voltage	L	48 V
Magnet type	D	High Dynamic
Frame Length	A	
Speed (min ⁻¹)	30	3000
Brake	X	Braked
Connection type	F	Flying lead power connection (0.5 m)
Output shaft	A	with output key
Feedback device code	CT	4096 ppr Incremental encoder (CTD)
Inertia & thermistor	X	Standard inertia + KTY83-110 thermistor
PCD (g/box)	062	62 (FF 75/60)
Shaft Diameter (g/box)	160	16j6 x 28.0
Fan Box	-	
Insulation class	F	
UL Motor / UL Stator	UL Stator	

Nominal characteristics

Motor Ambient Temperature (°C)	40	Drive Fsw (kHz)	12
Motor Stall Torque (Nm)	0.86	Stall Current (A)	7.8
Rated Torque (Nm)	0.69	Nominal Current (A)	6.3
Motor Peak Torque (Nm)	2.58	Kt (Nm/A)	0.11
Rated Power (kW)	0.4	Ke (V/kmin ⁻¹)	6.5
Winding Thermal Time Constant (s)	54	R (ph-ph) (Ohm)	0.4
Number of Poles	10	L (ph-ph) (mH)	1.2
Maximum Cogging (Nm)	0.01		
Inertia (kg.cm ²)	0.18		
Ingress Protection Level (IP)	IP54		

Brake	Spring-applied	Static Torque (Nm)	1.524
Release Time (ms)	37	Backlash (°)	
Brake Supply Voltage (V)	24.0	Brake Coil Power (W)	7.2

Torque / speed graph

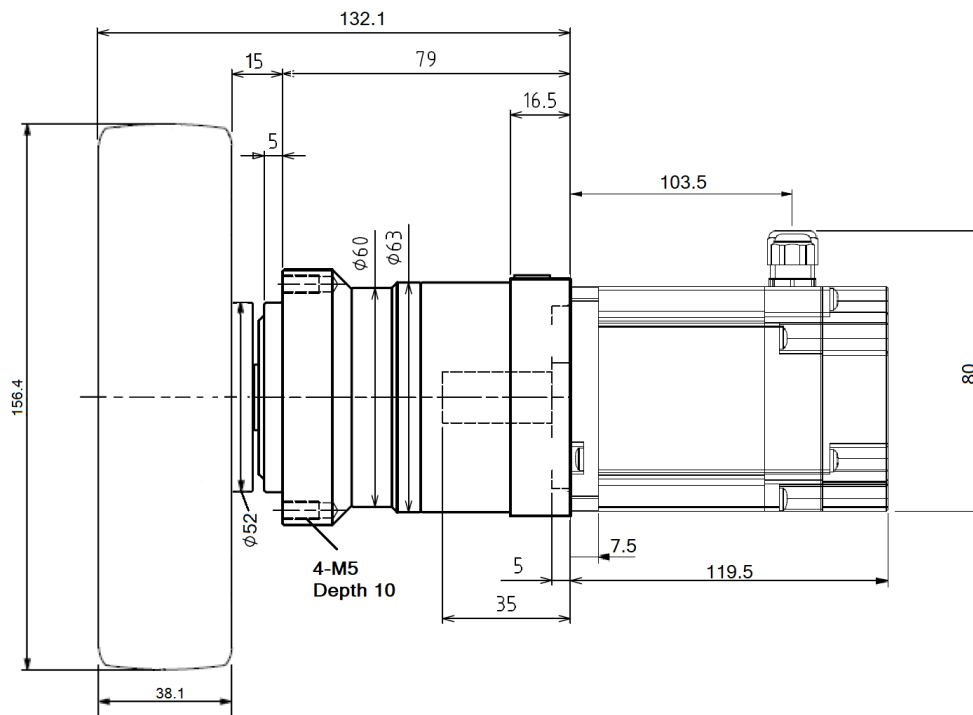


Enquiry N°:

Created by: DS / Approved by: PP

SERVO MOTOR

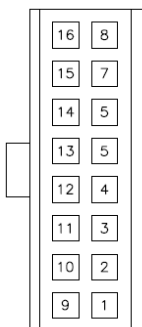
Motors (° & mm)



Motor electrical interface Connectors option:

Feedback device code: CT - 4096 ppr Incremental encoder (CTD), Molex 16-way signal connector (560 mm)

SIGNAL	COLOUR	16 WAY END B
SCREEN	DRAIN WIRE	1
-	-	2
CH S1	GREEN	3
CH S2	BROWN	4
CH S3	WHITE	5
CH A	YELLOW	6
CH B	BLUE	7
CH Z	ORANGE	8
GND	BLACK	9
VCC	RED	10
CH S1-	WHITE/GREEN	11
CH S2-	WHITE/BROWN	12
CH S3-	WHITE/GREY	13
CH A-	WHITE/YELLOW	14
CH B-	WHITE/BLUE	15
CH Z-	WHITE/ORANGE	16



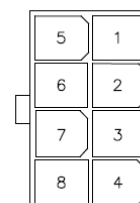
Connection type: F - Flying lead power connection (0.5 m)

POWER leads:

4 cores of 24 AWG UL 1330 wire, insulated, with polyolefin heatshrink sleeve.

COLOUR	SIGNAL FUNCTION	PIN END B
BLUE	U	1
BROWN	V	2
BLACK	W	5
GREEN/YELLOW	EARTH	6
YELLOW	THERMISTOR +	4
WHITE	THERMISTOR -	8
-	-	3
-	-	7

PIN DETAIL



8-WAY CONNECTOR

**WIRING TO BE
CONFIRMED**